



J.E. ADAMS INDUSTRIES  
OWNERS MANUAL  
MODEL 29050

- PAGE 2            SPECIFICATIONS
- PAGE 2 - 3      IMPORTANT SAFETY INFORMATION
- PAGES 3 - 4     INSTALLATION
- PAGES 4 – 6     PROGRAMMING
- PAGE 7           OPERATING
- PAGE 7           MAINTENANCE
- PAGES 7 - 8     TROUBLESHOOTING
- PAGES 9 – 14    PARTS LIST
- PAGE 15 – 19   WIRE DIAGRAMS

## **SPECIFICATIONS:**

### Unit specifications:

Voltage: 120v, 60Hz  
Amperage: (1) 30 amp service is required for this unit  
Weight: 260 lbs with pallet attached

### Vac specifications:

Motors: (3) Electro/Ametek 120v motors  
Fuses: (3) 10 amp inline fuses

### Blower motor specifications:

Motor: (1) Domel/Electro 120v  
Fuses: (1) 20amp inline fuse  
Heater: (1) 1200watt heating element.

NOTE: "UNIT INTENDED FOR COMMECIAL USE ONLY"

## **IMPORTANT SAFETY INSTRUCTIONS**

When using an electrical appliance, basic precautions should always be followed, including the following:

## **READ ALL INSTRUCTIONS BEFORE USING (THIS APPLIANCE).**

## **WARNING – To reduce the risk of fire, electric shock, or injury:**

- Do not use vacuum on wet surfaces.
- Use only as described in manual. Use only manufactures recommended attachments.
- Do not allow to be used as a toy. Close attention is necessary when used by or near children.
- Do not put any object into openings. Do not use with any opening blocked; keep free of dust, lint, hair and anything that may reduce air flow.
- Keep hair, loose clothing, fingers, and all parts of body away from openings and moving parts.
- Do not use to pick up or blow dry flammable or combustible liquids, such as gasoline, or use in areas where they may be present.
- "Do not pick up or blow dry anything that is burning or smoking, such as cigarettes, matches, or hot ashes."
- "DO not use vacuum without dust bag and/or filters in place."
- Use caution when touching the blower motor after use – heater tube can get hot!

- Keep hands, clothing, and other objects away from air intake on blower motor.

## SAVE THESE INSTRUCTIONS

### Installation Instructions:

- Determine location to mount unit (**"DANGER" "THIS EQUIPMENT INCORPORATES PARTS SUCH AS SWITCHES, MOTORS, OR THE LIKE THAT TEND TO PRODUCE ARCS OR SPARKS THAT CAN CAUSE AN EXPLOSION. WHEN LOCATED IN GASOLINE-DISPENSING AND SERVICE STATIONS INSTALL AND USE AT LEAST 20 FEET (6 M) HORIZONTALLY FROM THE EXTERIOR ENCLOSURE OF ANY DISPENSING PUMP AND AT LEAST 18 INCHES (450 MM) ABOVE A DRIVEWAY OR GROUND LEVEL."**)
- Run 30 amp service to that location (*NOTE UNIT HAS WIRE PROVIDED UNDERNEATH TO CONNECT INCOMING POWER SUPPLY*)
- **Grounding Instructions:** This appliance must be connected to a grounded metal, permanent wiring system; or an equipment-grounding conductor must be run with the circuit conductors and connected to the equipment-grounding terminal or lead on the appliance.
- Mount unit to location and use fig. 1 for mount pattern
- If unit is vault ready configuration see fig. 1 for mounting and fig. 2 for vault tube location.

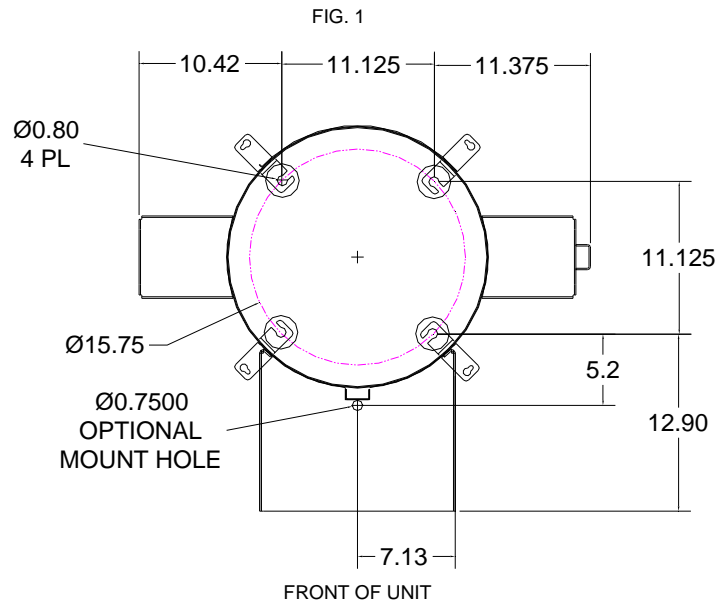
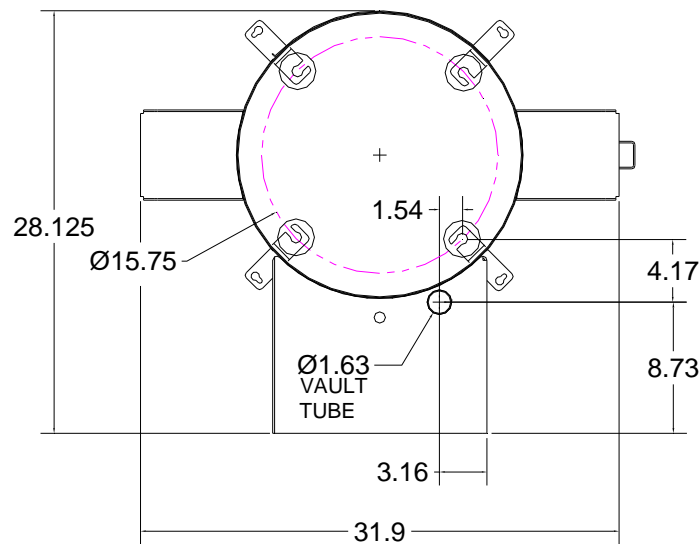


FIG. 2 (VAULT TUBE LOCATION)  
TOP VIEW



- Once unit has been installed use 5871B8 cap plugs supplied with unit to seal holes in canister bottom located in lower cleanout door. Then connect to power.
- Turn unit on and move to program instructions.

## Programming Instructions:

### Coin acceptor:

- No programming to acceptor needed if unit was purchased with the standard Imomex Z32 electronic acceptor (8149-92 our part number) is pre-programmed to accept US quarters, .984 tokens, US \$1 coin and 1.073 token. Acceptor is pre-programmed before it is sent to J.E. Adams.
- If different acceptor was purchased, see additional literature sent along with unit for programming info.

### Bill acceptor:

- Bill acceptor comes pre programmed from J.E. Adams and should not require any changes. If additional programming is needed to acceptors please refer to additional literature sent along with this unit.

### Display:

- Unit may be programmed when received depending on information given at that the time of order.
- To program follow the instructions below.

### Display programming with remote:

- 1) Press the red power button.
- 2) Timer will display 0000. At this time type in 4 digit access code. Note code will be 1234 until changed by customer.

- 3) Once code has been entered display should read ok. If display does not read ok, repeat step 1 and 2.
- 4) Press **CH +** button. Timer will display coin value. This should \$.25 and should not be changed.
- 5) Press the **CH +** button. Display will now read (**A: 30**) or may be a different time. (**A**) Will be the time per coin for the **HOT AIR DRYER**. Set desired time per coin by using the **VOL –** to decrease or the **VOL +** to increase. Once time is entered move to next step.
- 6) Press the **CH +** button. Display will now read (**B: 30**) or may be different time. (**B**) Will be the time per coin for **VAC**. Set desired time per coin by using the **VOL –** to decrease or the **VOL +** to increase. Once time is entered move to next step.
- 7) Press the **CH +** button. Display will now read C. C is not used.
- 8) Press the **CH +** button. Display will now read **D**. **D** is not used.
- 9) Press the **CH +** button. Display will now read **E**. **E** is not used.
- 10) Press the **CH +** button. Display will now read **F**. **F** is not used.
- 11) Press the **CH +** button. Display will now read (on A). This is the number of coins to start **HOT AIR DRYER**. Use the **VOL –** and **VOL +** to adjust. Once this is done press the **CH+** button and repeat for (B) **VAC**.
- 12) Press the **CH +** button. Display will read bonus time. Set if desired. See explanation at the end programming instructions.
- 13) Press the **CH +** button. Display will debit mode. Set if desired. See explanation at the end programming instructions.
- 14) Press the **CH +** button. Display will delayed start. Set if desired. See explanation at the end programming instructions.
- 15) Press the **CH +** button. Display will read **HLxx**. Set if desired. See explanation at the end programming instructions.
- 16) Press the **CH +** button. Display will read Restart off or restart on depending on what is set. Restart off will require a person to put in full amount after unit is turned off to reactivate. Restart on allows for additional coins to be put in the machine to keep unit running. To set use **VOL –** or **VOL +** to change.
- 17) Press the **CH +** button. Display will now read **STD** or **USER** or **MIX**. To make a custom message use **VOL +** button to scroll to **USER**. At this point press and hold **CH +** button until original message appears. At this time you may change the message simply by using the **VOL –** or **VOL +** buttons to change letters. **Once message has been entered you must put the symbol / at the end of message**. This will tell display that this is the end of the message.
- 18) Press the **CH +** button now 5 more times to exit programming.
- 19) Unit should now be programmed.

Program definitions:

- Bonus time settings:

- Amount of time set in bonus time is added to regular time per coin/pulse(e.g. if you want to give 45 seconds for bonus time and your regular time per coin is 30 seconds, you would set bonus time at 00:15)
  - Bonus is disabled by setting bonus time to 00:00.
  - If bonus time is set to less than one minute, bonus time is added when bonus coin is reached and every coin after that until time expires.
  - If bonus time is set at 1:00 or more, bonus will be a "one time" bonus. Bonus time will only be added for bonus coin or multiples of bonus coin (e.g. 16<sup>th</sup> coin, 32<sup>nd</sup> coin, etc). Any other coin will on receive regular time per coin.
  - If bonus time is set to 99:00, when bonus coin is deposited, timer will show "-on-" and timer will continue to run until coin switch wire is shorted to ground by a loop detector or other switch closure for a minimum of two seconds.
- Debit and credit mode:
    - Debit mode: As coins are deposited display shows "\$1.75 MORE, \$1.50 MORE, \$1.25 MORE" etc. until start price is reaches. Once start price is reached display switches to time accumulating until no more coins have been deposited.
    - Credit mode: As coins are deposited display shows money accumulating (\$.25, \$.50, \$.75 etc). If timer is also set to delayed start mode timer will continue to show money accumulating until no more coins have been deposited. If timer is set to instant start, as soon as start price is reached, timer will change to time counting down.
    - Both mode: As coins are deposited display shows money accumulating (\$.25, \$.50, \$.75 etc). If start price is not reached, after 5 seconds timer will alternate between "add \$x.xx more" and amount of money already deposited.

#### Display programming with push button:

- Unit can be programmed using buttons that are located inside display. One is labeled **S2**, which is used to change from item to item. One is labeled **S1** which is used to set desired value. If you hold down **S1** this will cause numbers to decrease. If you repeatedly push **S1** numbers will increase.
- When programming with buttons use same instructions as remote except for the following. Where it says to press **CH +** use **S2** and where it says to use **VOL +** or **-** use **S1**.

## Operating Instructions:

- Insert coins or bills to start machine, then press desired function button.
- If other function is selected other than original selected item unit will recalculate timer based on the amount of money it takes to start the specific function.
- Once service is used, hang up hose.

## Maintenance:

- Filter bags should be taken out weekly and shaken out. Also it might be a good idea to keep a new set of bags on hand so that once a month or longer you can take original bags out and wash them.
- Check vac hose and hot air blower hose for cracks on a weekly basis.
- Clean canister with a stainless steel cleaner as needed.
- Check motor brushes approx. every 3 months for excessive wear. Motor brushes should be changed if they are shorter than ¼". ***Please disconnect power before doing this.***
- If hot air blower hose needs repair, threaded joints must be fastened with JB weld epoxy. Hose clamps will need to be retightened after hose couplers get to full operating temperature.
- All servicing of machine should be conducted by an authorized service representative.

## Troubleshooting:

### ***DISCONNECT POWER BEFORE SERVICING***

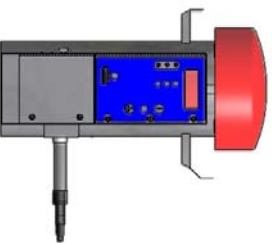
Problem	Possible cause	Solution
Unit is not powered	Breaker inside unit is not in the on position	Flip breaker on
Display is not powering	Breaker inside unit is not in the on position  Check transformer inside main power box in unit. Is there 24VAC at output terminal?	Flip breaker on  Replace transformer (8131-2)
Display reads "fail"	Coin acceptor putting out continuous pulse	Press mode button on display. If fail does not go away replace coin acceptor. (8149-92)



Program in display may be lost		Reprogram display. If fail goes away and then comes back, replace battery in display.
Unit keeps blowing my breaker from my incoming power source	Inadequate wire size supplied to machine	Call electrician and install proper wire size for 30amp service versus wire length or run.
	Wrong size breaker	Install correct breaker (only use wire size that is adequate to handle 30 amp breaker).
Fuses for vac motors keep blowing.	Inadequate wire size supplied to machine	Call electrician and install proper wire size for 30amp service versus length or run.
	Motor brushes may be bad or too short	Replace motor brushes (8055BR)
Hot air dryer heater will not come on.	Heater is controlled by 85 deg ambient temperature thermostat. Heater will not come on if temperature is near this point or if unit has been ran and is warmed up.	No action required unless ambient temperature is lower than 70 degrees and unit hasn't ran for a while. If so, unit may need serviced.
Hot air dryer motor will not come on.	Motor brushes may be bad or too short.	Replace brushes with Domel brand brushes.
Unit has lost suction or blowing power.	Hose clogged or damaged (vacuum) or hose connection is broke or damaged (hot air dryer). Filter bags need cleaned.	Clean debris from vac hose or replace (2036). Repair connection or replace hot air hose (2036-2). Clean out filter bags or replace (8076)
	Vac hose is damaged.	Replace vac hose (2036)
	Cleanout door gaskets torn or worn or lower cabinet mounting holes no longer have plugs in them.	Replace door gaskets (8159) or replace lower cabinet hole plugs (5871B8). DO NOT REUSE OLD PLUGS.



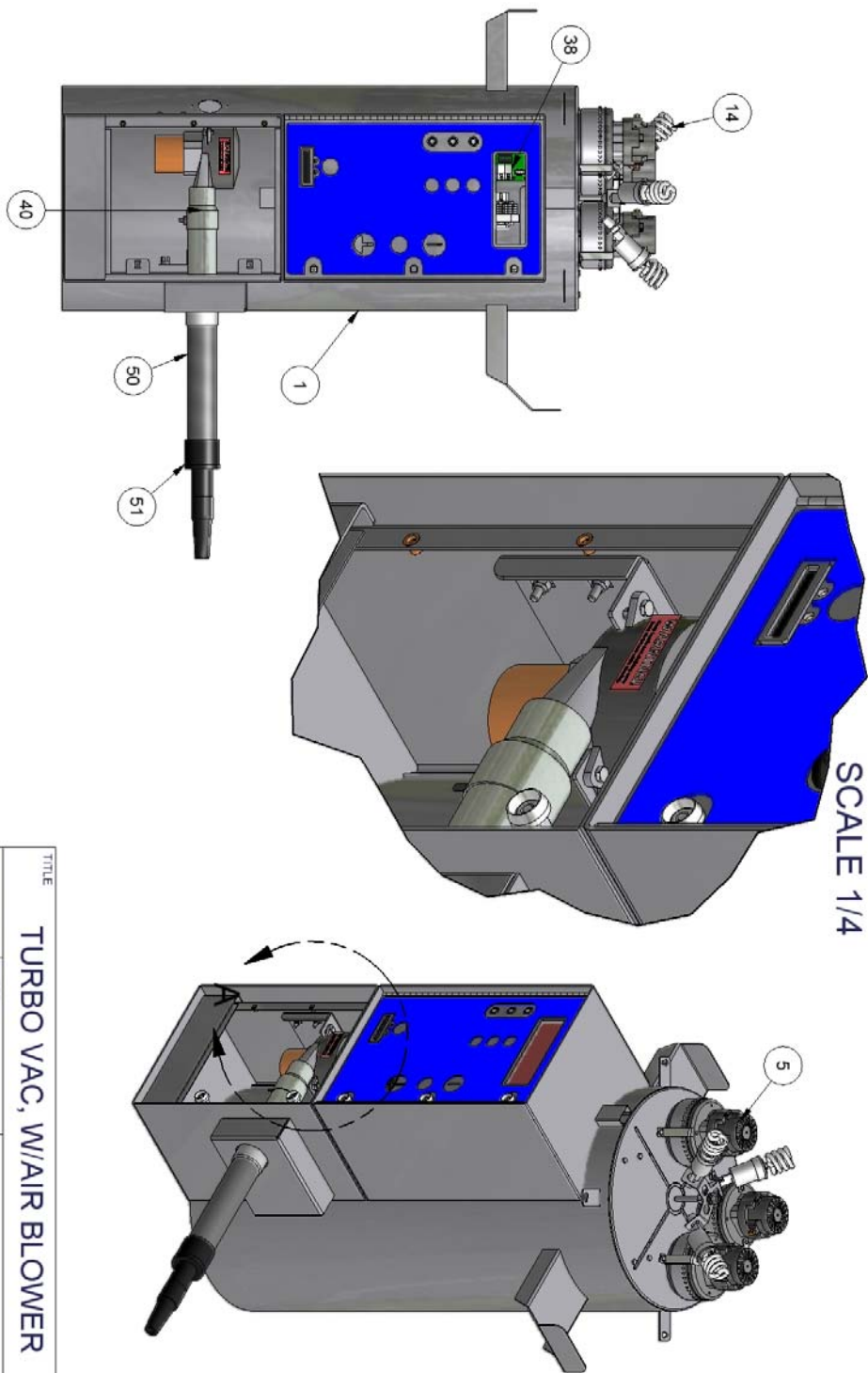
## BILL OF MATERIALS

ITEM	PART NUMBER	DESCRIPTION	QTY	ITEM	PART NUMBER	DESCRIPTION	QTY	
50	2036-2	HOSE, 2" X 30' BLACK HIGH HEAT	1	1	29025-1W-1	CANISTER WELD COMPLETE	1	
51	2058-5	NOZZLE, AIR BLOWER	1	2	29000-7CBA	SHAMPOO DOOR ASSEMBLY-W/CB	1	
52	5871b8	PLUG, VAC BOTTOM 2-1/2"	8	4	8057	MOTOR GASKET	3	
53	2036	2" x 15' VACUUM HOSE	1	5	8055	MOTOR, AMETEK 115V	3	
54	2058	CLAW & CUFF ASSY	1	6	28000-36	MOTOR MOUNT	10	
55	29050KIT	DECAL KIT	1	8	5601D1	1/4-20 x 1/2 HHCS-ZINC PLATED	6	
56	5647D2	RIVET 1/8"	16	9	8108	#10 x 1/2 TAP SCREW	6	
57	5647D8	RIVET 3/16	14	10	29000-30A	LIGHT BRACKET ASSEMBLY	1	
58	8076	FILTER BAG	4	4	11	5603D11	1/2 Sid NC Nylock Nut	2
59	8153-1	LATCH	4	12	5606D10	WASHER, FLAT 1/2 SAE	2	
60	8159	DOOR GASKET	2	13	5639D4	RUBBER GROMMET	2	
61	8182	DECAL, POWER DISCONNECT	2	14	8925	FLOURESCENT BULB	3	
62	8615-5W	CLEANOUT DOORS	2	15	8306	24" PLASTIC DOME	1	
63	B5997-001	FUSE HOLDER	3	16	8130-6	MARS 110V BILL VALIDATOR	1	
64	B5996-010	FUSE, 10A	3	18	5644D1	CAGE NUT	6	
65	8630	CARDBOARD BOX	1	19	29000-44W	VALIDATOR BOX WELDMENT	1	
66	00-CB-WIREKIT	COMPLETE WIRE CABLE PACKAGE	1	20	29000-47W	COIN BOX ENCLOSURE WELDMENT	1	
67	8939	PALLET	1	21	29000-52W	COIN BOX WELDMENT	1	
68	8000-21	WAGO CONN, 2 POLE FEMALE	2	23	29000-59	VALIDATOR FACEPLATE HANDLE	1	
69	8000-22	WAGO CONN, 2 POLE MALE	2	24	5636D1	#10-24 PHIL. PAN HEAD SCREW	2	
75	5601D4	1/4-20 x 3/4 HHCS-SS	3	25	5603D9	1/2 Sid NF Nylock Nut	2	
70	8833	FUSE HOLDER 20AMP	1	31	5603D5	1/4 Sid NC Nylock Nut	8	
71	5997D1	FUSE, 20AMP	1	32	29000-45W	VALIDATOR FACEPLATE	1	
72	5721D1	HEAT SHRINK TUBING, .5" DIA	1.5"			WELDMENT		
73	5943F2220	WIRE, 10G BLACK	54"	34	8958-1	MEDECO SCREW LOCK	2	
74	5943F3229	WIRE, 10G WHITE	45"	36	5635D1	1/4-20X1/2 CARRIAGE BOLT	8	
76	1034	WARNING LABEL, AIR BLOWER	1	37	5603D2	1/4 Sid NC Nylock Nut	15	



<div>  </div>				<div> <div>TITLE</div> <div>TURBO VAC, W/AIR BLOWER</div> </div>	
<div> <div>REV</div> <div>NO.</div> </div>		<div> <div>DESCRIPTION</div> </div>		<div> <div>DATE</div> <div>BY</div> </div>	
<div> <div>THIS DOCUMENT SHALL NOT BE REPRODUCED NOR SHALL THE INFORMATION THEREIN BE USED BY OR DISCLOSED TO OTHERS EXCEPT AS AUTHORIZED BY J.E. ADAMS INDUSTRIES</div> </div>		<div> <div>UNSPECIFIED TOLERANCES</div> <div>1 PL ± .030</div> <div>2 PL ± .010</div> <div>3 PL ± .003</div> <div>ANGLE ± 1.0°</div> </div>		<div> <div>MATERIAL</div> <div>SCALE</div> <div>DRAWN BY JOHN F.</div> <div>DATE 7/20/2009</div> </div>	
<div> <div>PART NO.</div> <div>29050</div> </div>		<div>  </div>		<div> <div>CEADAR RAPIDS, IOWA</div> <div>REV.</div> </div>	

DETAIL A  
SCALE 1/4



TITLE			
TURBO VAC, W/AIR BLOWER			
UNSPECIFIED TOLERANCES		MATERIAL	
1 PL	± .030	SCALE	
2 PL	± .010	BY	
3 PL	± .003	DATE	
ANGLE ± 1.0°		PART NO.	
		29050	
		REV.	

THIS DOCUMENT SHALL NOT BE REPRODUCED NOR SHALL THE INFORMATION THEREIN BE USED BY OR DISCLOSED TO OTHERS EXCEPT AS AUTHORIZED BY J.E. ADAMS INDUSTRIES

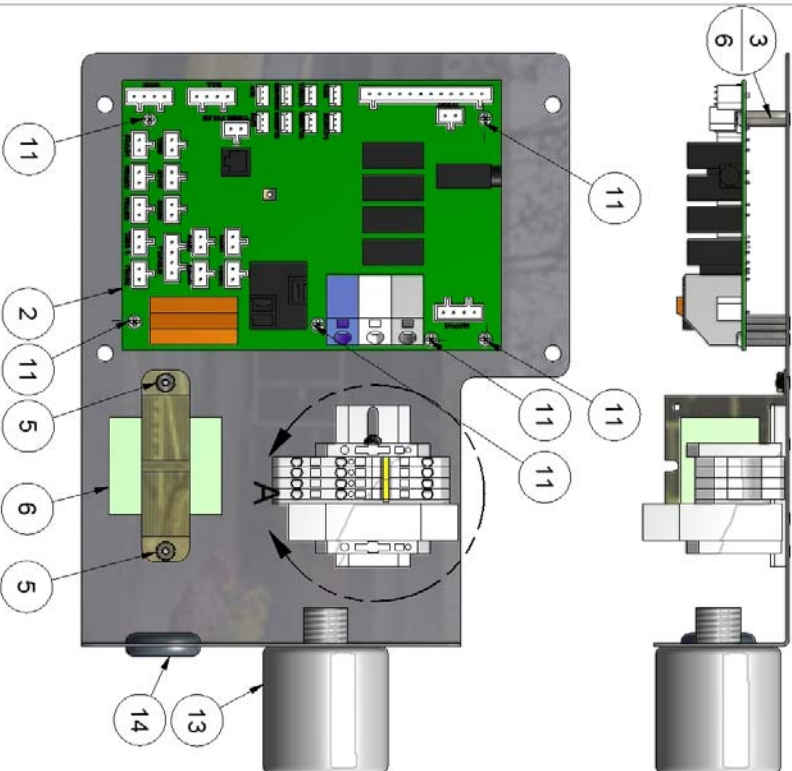


PART NO. 29000-250A

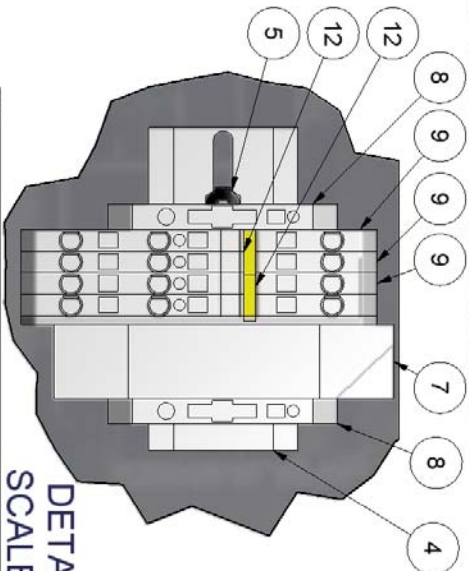
NOTE:  
1) ASSEMBLY ALL ITEMS AS SHOWN.

2) USE WIRE ASSEMBLY 00-CB-CONTROL PANEL TO WIRE THIS CONTROL PANEL ASSEMBLY. THE 00-CB-CONTROL PANEL IS LOCATED IN THE 00-CB-WIRE KIT PACKAGE PURCHASED FROM TIMBERLINE. THE 00-CB-WIRE KIT IS CALLED OUT UNDER THE 29000 TOP LEVEL ASSEMBLY.

3) USE WIRE DIAGRAM S29000\_CB\_CONTROL.



ITEM	PART NUM	DESCRIPTION	QTY
1	29000-250W	BRACKET, CONTROL PLATE WELDMENT	1
2	CB-5002	CIRCUIT BOARD, MULTI FUNCTION UNITS	1
3	5000D6	#6-32 x .75 FxF STANDOFF	6
4	28000-129	DIN RAIL CUT TO 3"	1
5	8157	NUT, #6-32 KEPP NUT STAINLESS	4
6	8131-2	TRANSFORMER, 110/220-24 1.66A	1
7	28000-128	MAGNETIC CIRCUIT BREAKER	1
8	28000-124	TERMINAL BLOCK STOP	2
9	28000-800	33A DIN BLOCK, 10 GA.	4
10	28000-820	END BARRIER, GREY	1
11	5662D5	6-32 x 3/8 PHIL. PAN -MACHINE SCREW	6
12	28000-155	JUMPER	2
13	29000-302-R	LIGHTENING ARRESTOR, LA302-R	1
14	5639D6	RUBBER GROMMET	1



DETAIL A  
SCALE 3 / 4

TITLE  
CONTROL PANEL ASSEMBLY W/CB

UNSPECIFIED TOLERANCES  
SCALE  
1 PL. ±.030  
2 PL. ±.010  
3 PL. ±.003  
ANGLE ±10°

MATERIAL  
CEDAR RAPIDS, IOWA  
DRAWN BY CHAD K.  
DATE 2/16/2009

PART NO. 29000-250A  
REV.

THIS DOCUMENT SHALL NOT BE REPRODUCED NOR SHALL THE INFORMATION THEREIN BE USED BY OR DISCLOSED TO OTHERS EXCEPT AS AUTHORIZED BY J.E. ADAMS INDUSTRIES



PART NO.

29000-7CBA

## BILL OF MATERIALS

## NOTE:

1) ASSEMBLY ALL ITEMS AS SHOWN.

2) USE WIRE ASSEMBLY 00-CB-DOOR TO WIRE THIS DOOR ASSEMBLY. THE 00-CB-DOOR IS LOCATED IN THE 00-CB-WIRE KIT CABLE PACKAGE PURCHASED FROM TIMBERLINE. THE 00-CB-WIRE KIT IS CALLED OUT UNDER THE 29000 TOP LEVEL ASSEMBLY.

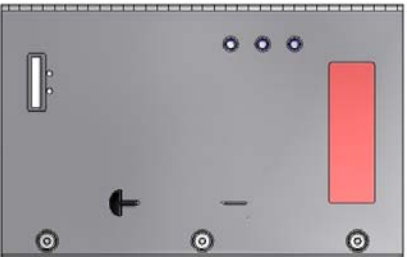
3) USE WIRE DIAGRAM S29000\_CB\_DOOR FOR 29000 UNIT OR S29035\_CB\_DOOR FOR A 29035 UNIT.

4) DO NOT OVER TIGHTEN PUSH BUTTONS ONTO DOOR. MAKE SURE THEY ARE SLUG AND ORINGS ARE NOT PROTRUDING FROM SIDE OF PUSH BUTTON, IF SO THEY ARE TO TIGHT.

5) APPLY A GENEROUS AMOUNT OF HOT GLUE TO THE BACK OF THE NUT AND SWITCH. THIS WILL KEEP THE NUT FROM LOOSING UP.

6) WIRE ASSEMBLY 00-CB-D-06 FOR DISPLAY COMES WIRED TO PLUG DIRECTLY INTO CIRCUIT BOARD. WIRES MUST BE RAN THRU THE HOLE THAT IS DRILLED IN THE BOTTOM OF THE DISPLAY AND WIRED ACCORDING TO CONNECTOR THAT IS SUPPLIED WITH THE DISPLAY. THE YELLOW WIRE WHICH SHOULD BE LABELED D12 MUST GO INTO THE CONNECTOR LABELED 12 AND ALL OTHER WIRES WIRED IN DESCENDING ORDER. FAILURE TO WIRE DISPLAY PROPERLY MAY RESULT IN MALFUNCTION OF DISPLAY OR POSSIBLE DAMAGE TO THE CIRCUIT BOARD. IF IN DOUBT ASK QUESTIONS.

ITEM	PART NUMBER	DESCRIPTION	QTY
1	29000-199	GASKET, VALIDATOR MOUNT	1
2	29000-24	DISPLAY BRACKET	2
3	29000-25	HORN BRACKET	1
4	00-CB-D-05	BLUE PUSH BUTTON	3
4	29000-34	LEXAN WINDOW	1
5	29000-7CBW	CONTROL DOOR WELDMENT	1
6	5611D2	NUT, 10-24 UNC KEPP-ZINC	4
7	5629D2	#8 x 1/2 SELF TAPPING SCREW	4
8	8000-11	ALARM, LAST COIN ALERT	1
9	8000-15	BIG DIXMOR DISPLAY	1
10	8149-92	IMONEX COIN ACCEPTOR - ELECTRIC	1
11	8157	NUT, #6-32 KEPP NUT STAINLESS	4
12	8659-24	LOCK COLLAR -SS	3
13	8726	PUSH BUTTON	1
14	8958-2	MEDECO SCREW LOCK	3
15	8000-21	2 POLE FEMALE WAGO CONNECTOR	2
16	5639D6	GROMMET	1



TITLE  
SHAMPOO DOOR ASSEMBLY-W/CB

CEDAR RAPIDS, IOWA



CEDAR RAPIDS, IOWA

MATERIAL

SCALE

BY

CHAD K.

DATE

2/16/2009

PART NO.

29000-7CBA

REV.

UNSPECIFIED TOLERANCES

1 PL ±.030

2 PL ±.010

3 PL ±.003

ANGLE ±1.0°

## DESCRIPTION

DATE BY

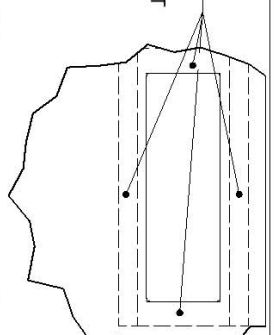
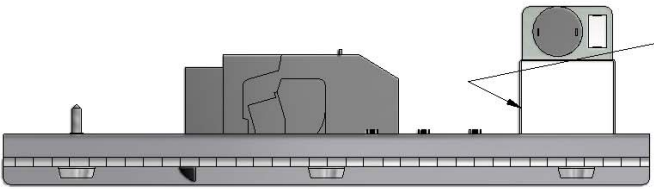
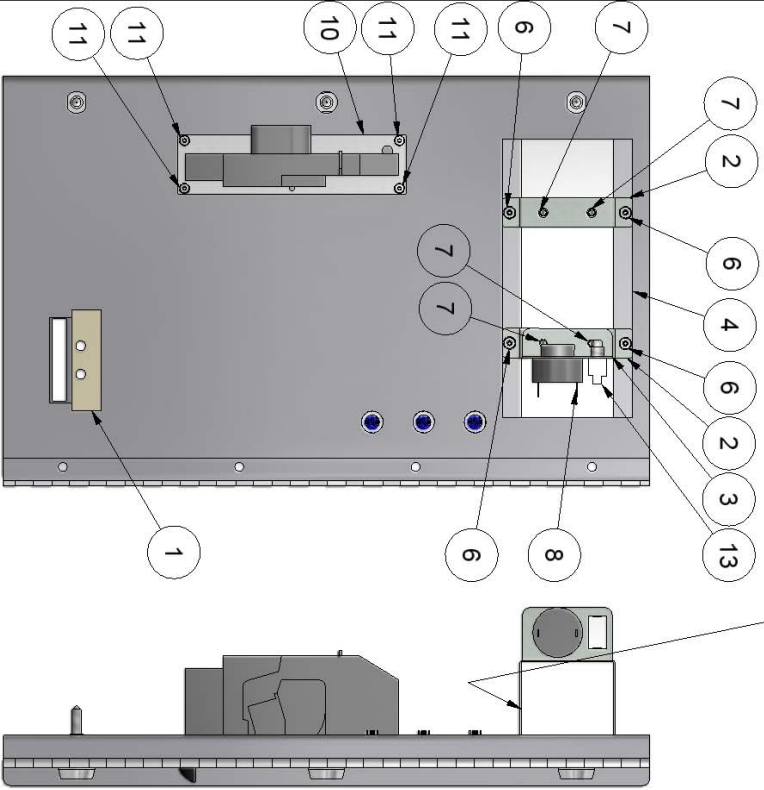
THIS DOCUMENT SHALL NOT BE REPRODUCED NOR SHALL THE INFORMATION THEREIN BE USED BY OR DISCLOSED TO OTHERS EXCEPT AS AUTHORIZED BY J.E. ADAMS INDUSTRIES

PART NO.

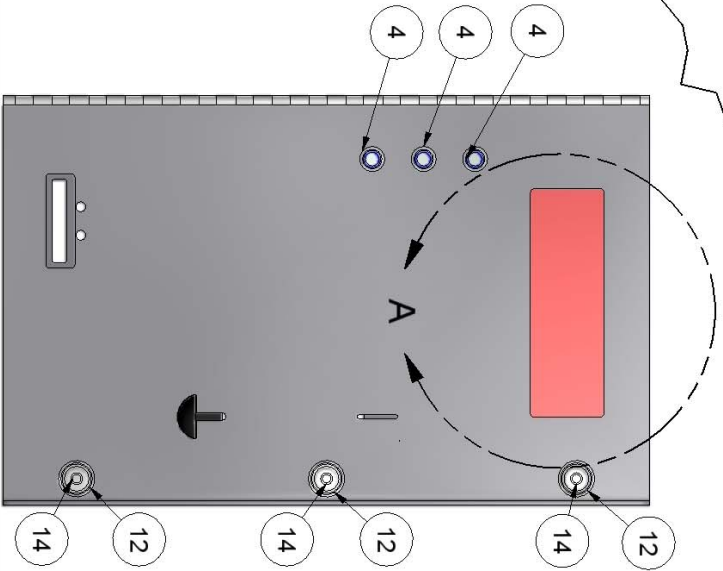
29000-7CBA

NOTE:

- 1) ATTACH LEXAN PLATE USING SILICONE. APPLY EVENLY AROUND DISPLAY OPENING.
- 2) DRILL HOLE ON BOTTOM SIDE OF DISPLAY FOR WIRING AND PLACE (1) 5639D6 GROMMET IN HOLE.



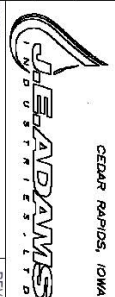
DETAIL A  
SCALE 0.20 : 1



TITLE  
SHAMPOO DOOR ASSEMBLY-W/CB

MATERIAL  
CEDAR RAPIDS, IOWA

UNSPECIFIED TOLERANCES  
SCALE  
1 PL.  $\pm .030$   
2 PL.  $\pm .010$   
3 PL.  $\pm .003$



DRAWN BY  
CHAD K.  
DATE  
2/16/2009

PART NO.  
29000-7CBA

REV.

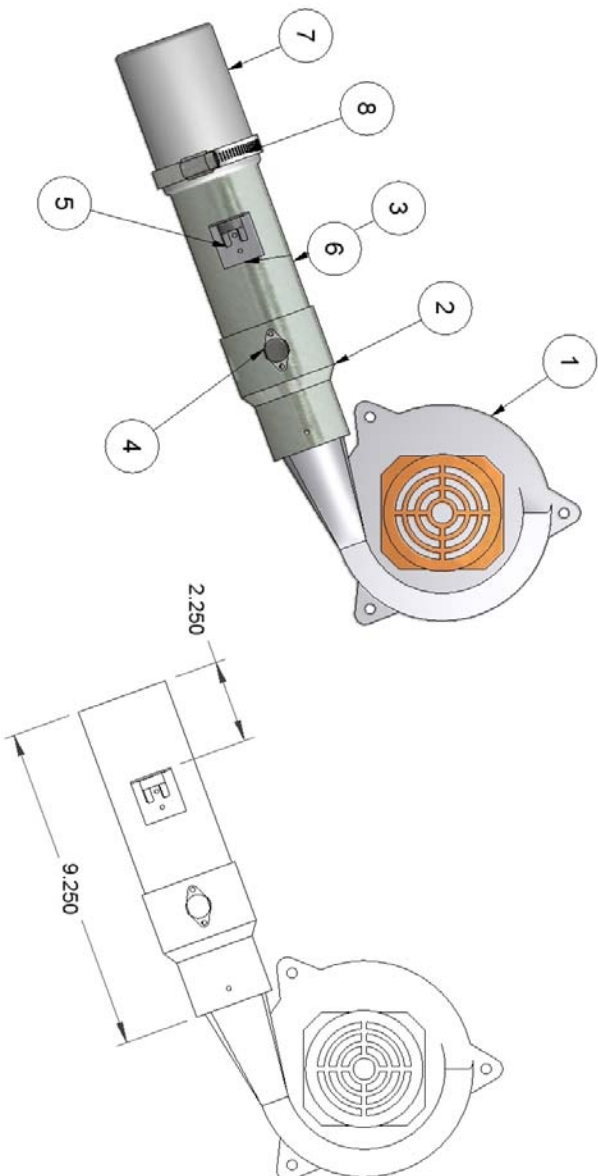
REV	NO.	DESCRIPTION	DATE	BY
THIS DOCUMENT SHALL NOT BE REPRODUCED NOR SHALL THE INFORMATION THEREIN BE USED BY OR DISCLOSED TO OTHERS EXCEPT AS AUTHORIZED BY J.E. ADAMS INDUSTRIES				

PART NO.

8061A

BILL OF MATERIALS

ITEM	PART NUM	DESCRIPTION	QTY
1	8061-720	MOTOR, DOMEL 115V	1
2	8061-720-1	COUPLER	1
3	8061-720-2	HEATER HOUSING	1
4	8061-720-3	THERMOSTAT	1
5	8061-720-4	THERMOSTAT	1
6	8061-720-5	BRACKET, THERMOSTAT	1
7	2081	COUPLER, VAC HOSE	1
8	8061-720-8	3" DIA CLAMP	1



TURBO TOWEL ASSY

UNSPECIFIED TOLERANCES

1 PL ± .030

2 PL ± .010

3 PL ± .003

ANGLE ± 1.0°

MATERIAL

SCALE

DRAWN BY

DATE

8/31/2009

JOHN F.

8061A

REV.

8061A

8061A

8061A

8061A

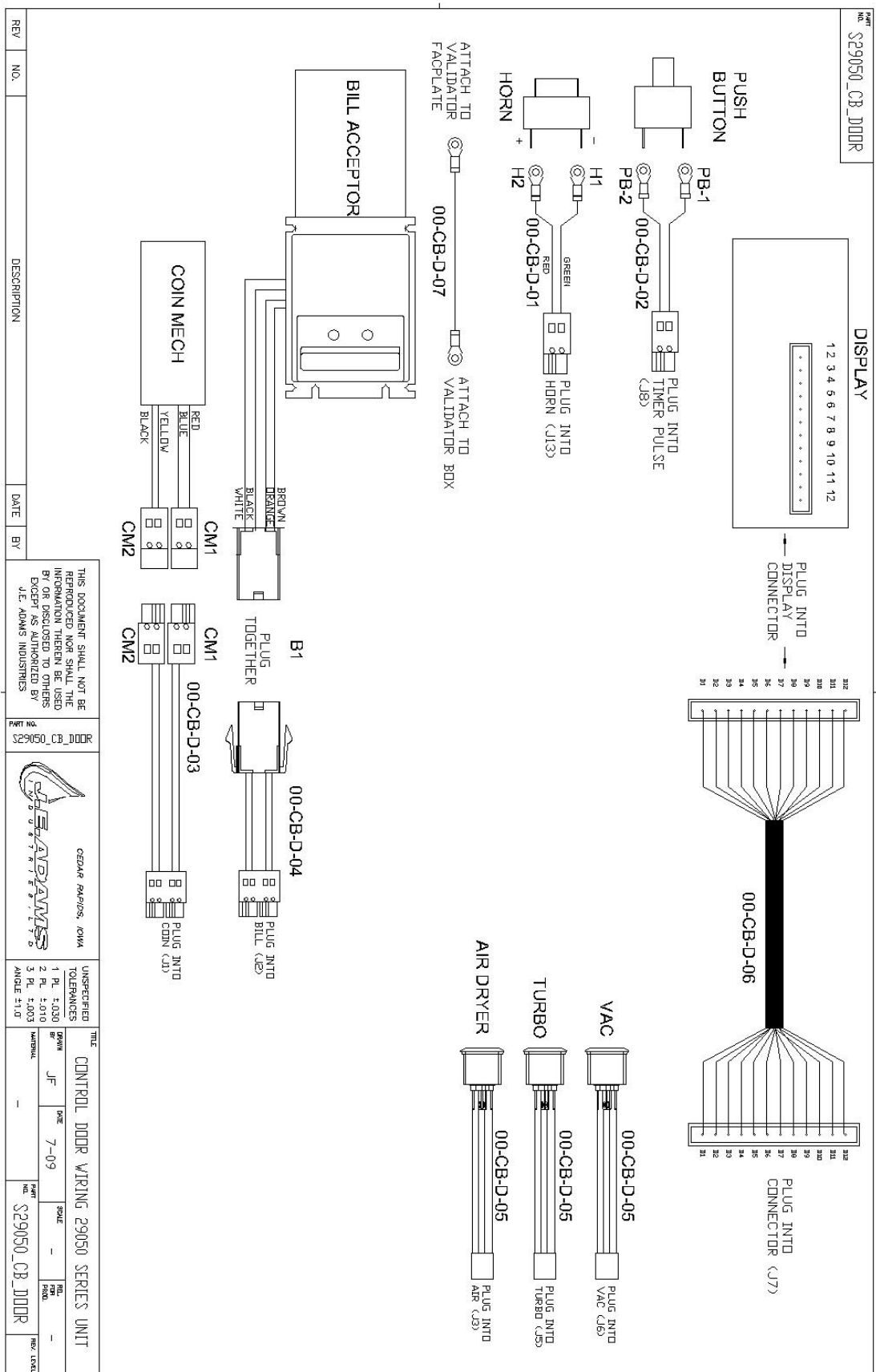
8061A

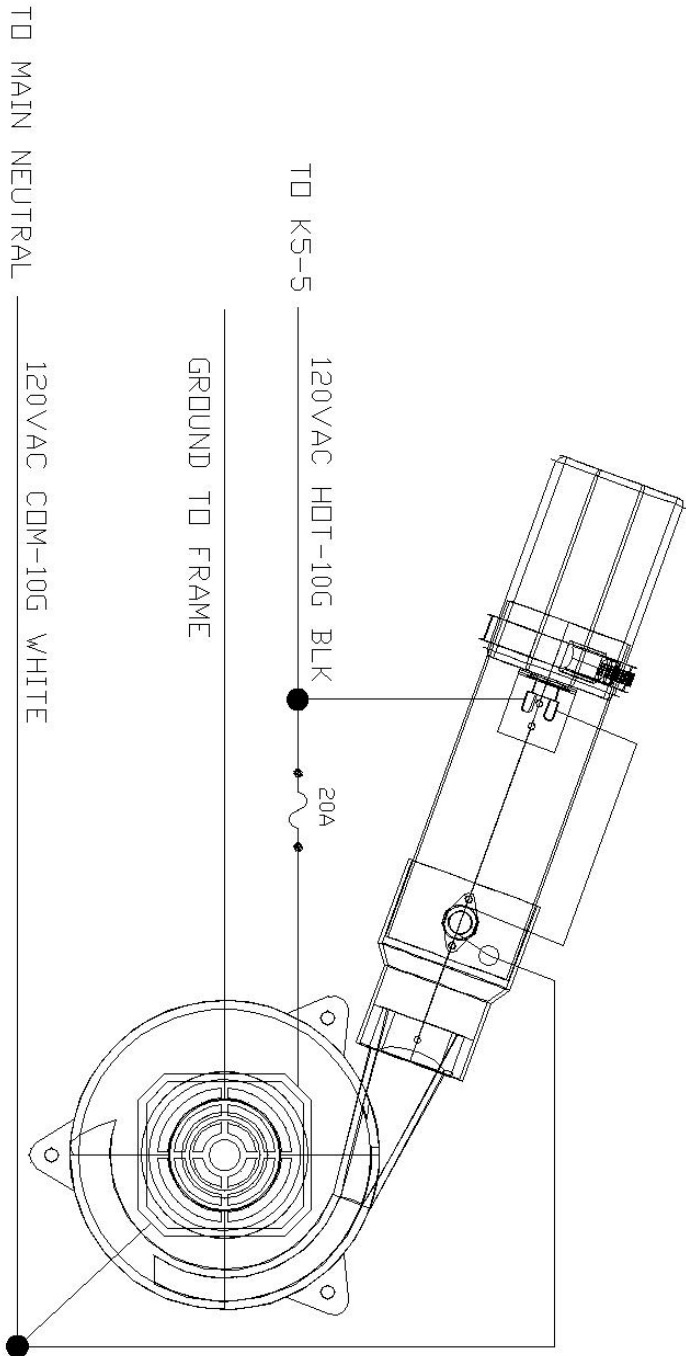
8061A

8061A

8061A

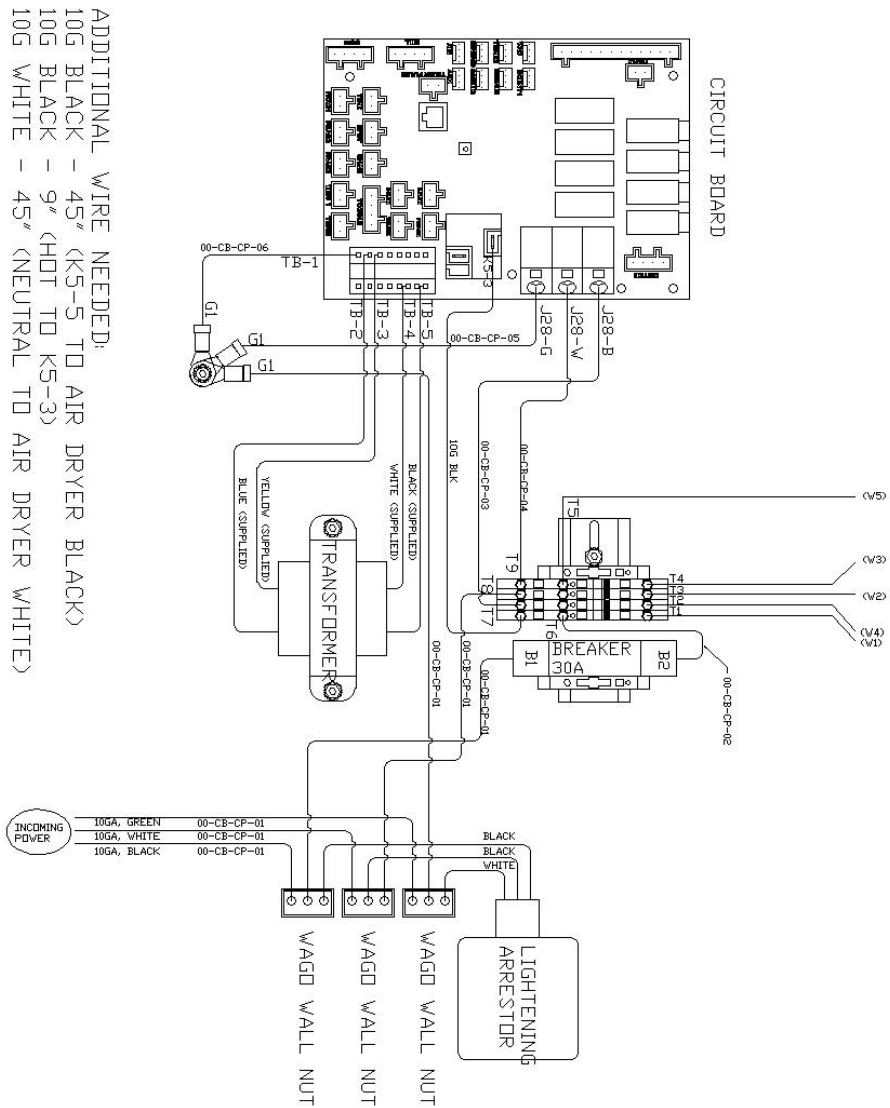
8061A





					THIS DOCUMENT SHALL NOT BE REPRODUCED NOR SHALL THE INFORMATION THEREIN BE USED BY OR DISCLOSED TO OTHERS EXCEPT AS AUTHORIZED BY J.E. ADAMS INDUSTRIES	
REV	NO.	DESCRIPTION	DATE	BY		
					PART NO.	S29050_CB_DRYER
					 CEDAR RAPIDS, IOWA	
					UNSPECIFIED TOLERANCES	
					1 PL ± 0.30	
					2 PL ± 0.10	
					3 PL ± 0.03	
					ANGLE ± 1.0	
					TITLE	
					WIRE DIAGRAM, 29050 DRYER ASSEMBLY	
					DRAWN BY	JF
					DATE	7-09
					SCALE	-
					REV	-
					REV	-
					PART NO.	S29050_CB_DRYER
					REV. LEVEL	





REV.	NO.	DESCRIPTION	DATE	BY	THIS DOCUMENT SHALL NOT BE REPRODUCED NOR SHALL THE INFORMATION THEREIN BE USED BY OR DISCLOSED TO OTHERS EXCEPT AS AUTHORIZED BY J.E. ADAMS INDUSTRIES
					<p>PART NO.</p> <p>S29050_CB_CONTROL</p>  <p>UNSPECIFIED TOLERANCES</p> <p>1 PL. ±.030 2 PL. ±.010 3 PL. ±.003 ANGLE ±1.0°</p>
<p>TITLE</p> <p>CONTROL PANEL WIRING 29050SERIES UNITS</p>					
					<p>DRAWN BY</p> <p>JF</p> <p>DATE</p> <p>7-09</p> <p>SCALE</p> <p>-</p> <p>PART NO.</p> <p>S29050_CB_CONTROL</p> <p>REV. LEVEL</p> <p>-</p>



